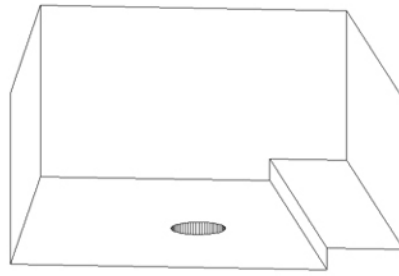


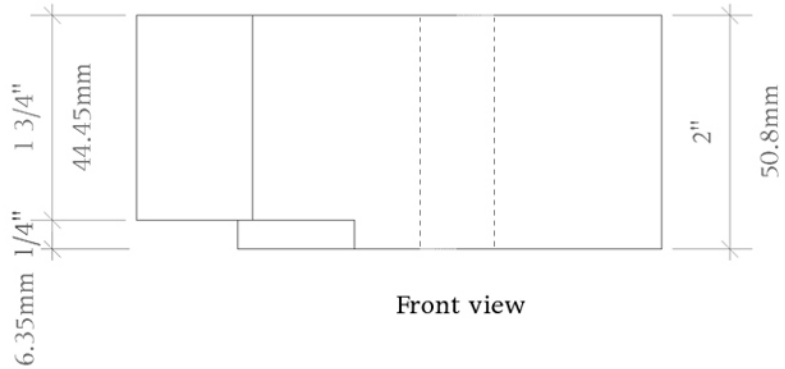
Right side



Left side

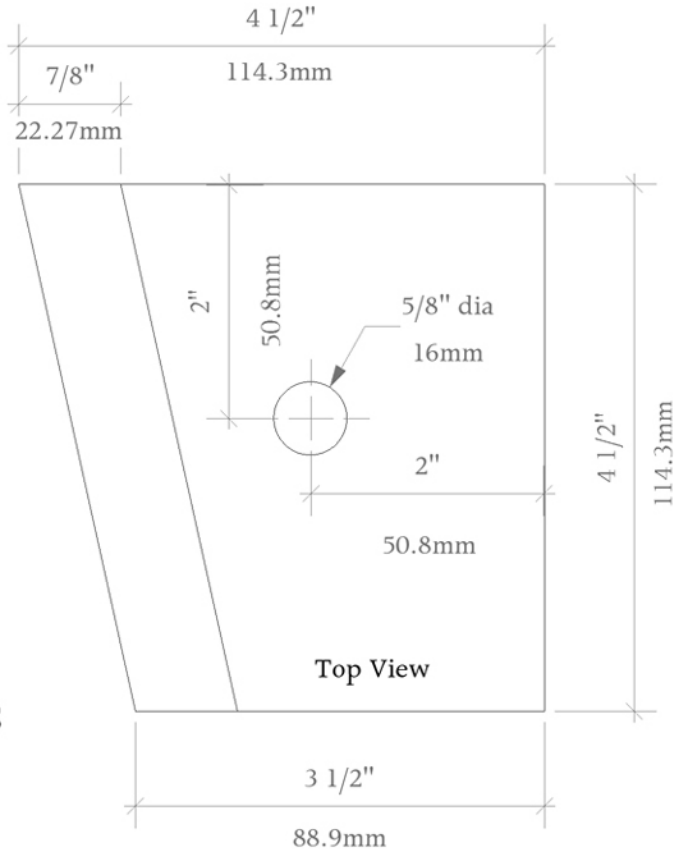
Perspective view of mounts  
from below and front of truck

The height of the blocks may vary from vehicle to vehicle, I would suggest that you set up or check your other body mounting pads. Make certain that the doors are sitting correctly in their openings. Once the body is confirmed as sitting correctly and straight, then you can check the clearance at the front mount positions.



Front view

The blocks are tapered from front to back. Narrow end towards the front. There is a 1/4" high by 7/8" wide clearance cutout on the outside bottom edge to clear a rib on the outer body panel. The hole is drilled off center as indicated.



Top View

# Front Cab Mounting Blocks WC53 Carryall

And probably most all 3/4 ton WC's